

Lightology

lightology.com
866-954-4489
10-06-25

Project: _____
Company: _____
Location: _____ Fixture Type: _____
SPEC #: **OBL1459673**
Approved On: _____ Approved By: _____

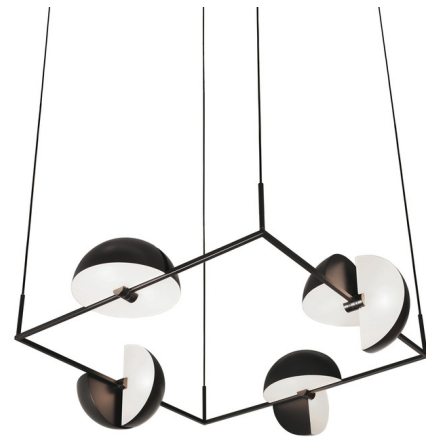
Trapeze Quartette Pendant

By Oblure

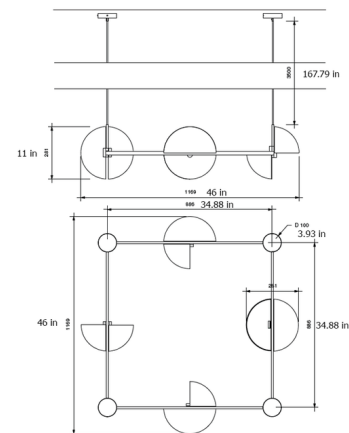


Description

The Trapeze Quartette Pendant features four pairs of half-moon shaped shades mounted together. Each shade can be rotated 360 degrees, allowing for the simultaneous combination of uplight and downlight, offering both playful flexibility and practical functionality. Its bold yet pragmatic form makes it ideal for dynamic lighting arrangements. Note: Fixture does not fit on a standard 4in junction box.



Shown in black



Specifications

COLOR N/A
BODY FINISH Black
WATTAGE 72W
DIMMER Standard 120V
DIMENSIONS 45.98"W x 11.06"H x 45.98"D
BULB NOT INCLUDED 8 x B10/Candelabra (E12)/9W/120V LED



CLICK TO VIEW PRODUCT

Notes: