

# Lightology

lightology.com  
866-954-4489  
06-29-26

Project: \_\_\_\_\_

Company: \_\_\_\_\_

Location: \_\_\_\_\_ Fixture Type: \_\_\_\_\_

SPEC #: **EDG1480759**

Approved On: \_\_\_\_\_ Approved By: \_\_\_\_\_

## Luca 2.7 inch Round DALI/DMX RGBTW 48V Trimless Wall Wash By PureEdge Lighting



### Description

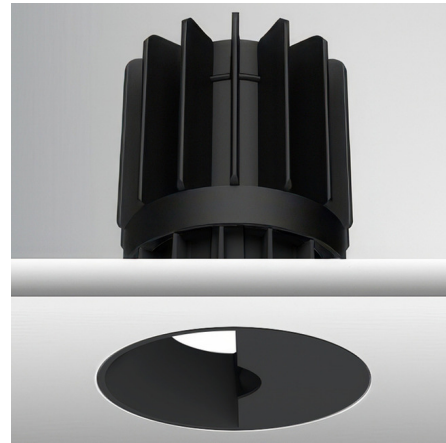
Experience the radiance of Luca 2.7, a cutting-edge wall wash downlight that embodies its Latin namesake as the Bringer of Light! Luca is a testament to the latest advancements in cutting-edge lighting technology, delivering high performance solutions designed to elevate hospitality, retail, commercial, and discerning residential spaces. The Luca 2.7 DMX/DALI TruColor technology uses five channels of tunable LEDs composed of RGBTW (Red, Blue, Green and Tunable White) 1500K-6500K color temperature. Unlock the full potential of Luca's extensive color palette, superior output, energy efficiency, smart control, and exceptional color consistency. The compact form of the Luca 2.7 allows for installation in new construction and remodel applications with limited clearance. With the PureEdge Unity 2 DMX Gateway Luca 2.7 seamlessly integrates into all major Home Lighting Systems. Luca 2.7 DMX/DALI is a Remodel Non-IC housing with a wall wash asymmetrical beam trim complete with a DMX decoder with 48VDC input Class 2 wiring. Required remote power supply sold separately. Can be used for new construction applications with new construction mounting frame or new construction housing sold separately.

### Specifications

REFLECTOR/BAFFLE COLOR	Black
BODY FINISH	N/A
WATTAGE	14W
DIMMER	N/A
DIMENSIONS	2.75"W x 3.81"H
INTEGRATED LED MODULE	1 x LED/14W/48V LED

### Technical Information

APERTURE SIZE	2.700"
APERTURE SHAPE	Round
HOUSING HEIGHT	4"
HOUSING TYPE	Remodel NON IC
CEILING TYPE	Drywall Trimless/Flush
FUNCTION	Wall Washer
LAMP LIFE	50000 hours
COLOR RENDERING	95 CRI
LAMP COLOR	RGB+White
LUMENS/WATT	33.43
LUMINOUS FLUX	468 lumens



Shown in black



CLICK TO VIEW PRODUCT

Notes: