

Lightology

lightology.com
866-954-4489
05-20-26

Project: _____
 Company: _____
 Location: _____ Fixture Type: _____
 SPEC #: **ELE1535508**
 Approved On: _____ Approved By: _____

Element 3IN Square Wood Ceiling Wall Wash Housing

By Visual Comfort Architectural



Description

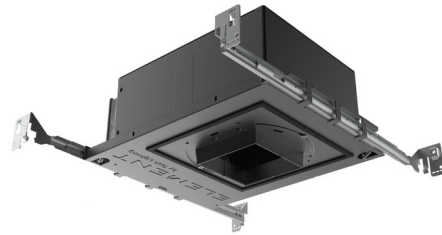
The 3 Inch Square 90CRI Flangeless Wall Wash IC Airtight or Chicago Plenum New Construction Housing for square flangeless wall wash trims for wood ceilings provides a consistent floor of illumination vertically and horizontally without hotspots, scallops, or shadows. Wood ceiling option accommodates flangeless trims only. Square housing has 90 degree rotation increments and 45 degree alignment for collar. 3 7/8 inch ceiling cutout. Includes a 16 watt LED light source. Includes a 120/277V Universal driver, dimmable with standard reverse-phase, forward-phase, TRIAC, and 0-10V down to 1%. NOTE: A complete fixture requires a housing and trim, sold separately.

Specifications

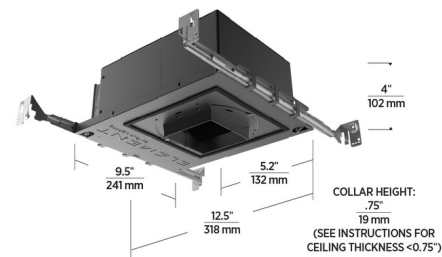
COLOR	N/A
BODY FINISH	Black Powder Coat
WATTAGE	16W
DIMMER	Low Voltage Electronic
DIMENSIONS	12.5"W x 4"H x 9.5"D
INTEGRATED LED MODULE	1 x LED/16W/120-277V LED

Technical Information

APERTURE SHAPE	Square
HOUSING HEIGHT	4"
HOUSING TYPE	New construction IC Airtight
CEILING TYPE	Wood
FUNCTION	Wall Washer
COLOR RENDERING	.90 CRI
LUMENS/WATT	80.50
LUMINOUS FLUX	1288 lumens



Shown in black powder coat



IC AIRTIGHT / CHICAGO PLENUM



CLICK TO VIEW PRODUCT

Notes: