

# Lightology

lightology.com  
866-954-4489  
04-25-26

Project: \_\_\_\_\_

Company: \_\_\_\_\_

Location: \_\_\_\_\_ Fixture Type: \_\_\_\_\_

SPEC #: **TDX1549721**

Approved On: \_\_\_\_\_ Approved By: \_\_\_\_\_

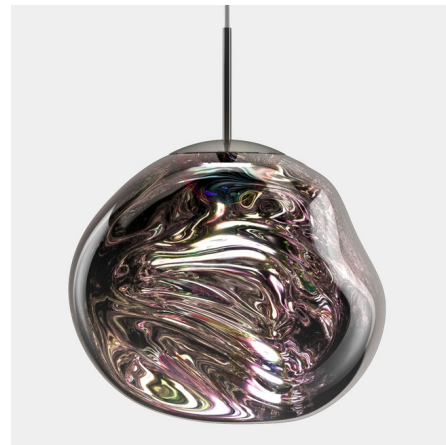
## Melt Dichroic Pendant

By Tom Dixon



### Description

The Melt Dichroic Pendant celebrates the 10th anniversary of Tom Dixon's Melt collection by pairing the iconic shade with a dichroic lens. The lens splits light from the integrated LED light source into constituent parts of the spectrum, producing an array of colors in addition to Melt's already dazzling display of reflections. When the lamp is turned on, the shade changes from mirrored silver to reveal a myriad of internal reflections within its imperfect, organically shaped shade. Melt is evocative of molten glass, the interior of a melting glacier, or images of deep space. Standard 120V or ELV dimmable.



Shown in silver / silver dichroic



### Specifications

COLOR . . . . . Silver Dichroic  
BODY FINISH . . . . . Silver  
WATTAGE . . . . . 6W  
DIMMER . . . . . Standard 120V  
DIMENSIONS . . . . . 19.7"W x 19.7"H  
INTEGRATED LED MODULE . . . . . 1 x LED/6W/120V LED  
COUNTRY OF ORIGIN . . . . . Germany

### Technical Information

COLOR RENDERING . . . . . 90 CRI  
LAMP COLOR . . . . . 3000K  
LUMENS/WATT . . . . . 133.33  
LUMINOUS FLUX . . . . . 800 lumens



CLICK TO VIEW PRODUCT

Notes: