



DESIGNER

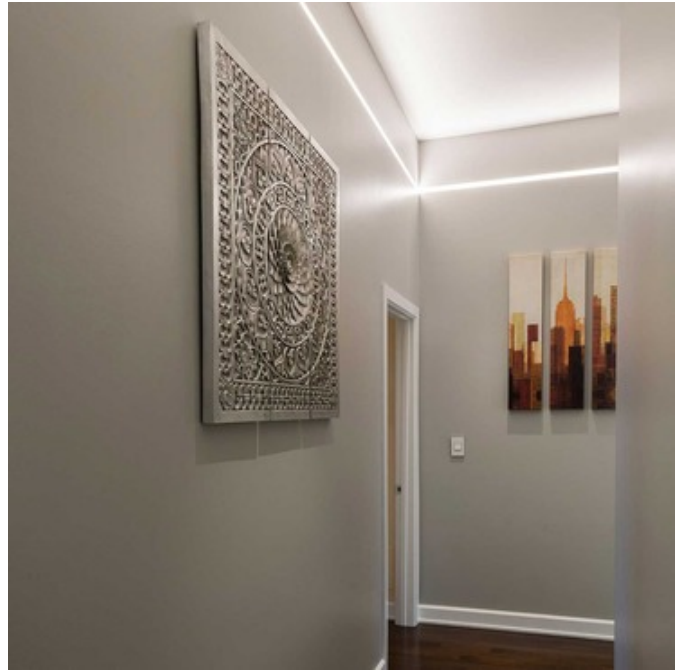
Gregory Kay

BRAND

PureEdge Lighting

### DESCRIPTION

Reveal Cove/Pathway, a 24VDC linear LED system, features a shallow plaster-in aluminum extrusion. May be secured directly to studs without joist modification and plasters into .50 inch or thicker drywall, or between studs. Sold in 12 inch increments up 40 feet (2 watt), 20 feet (5 watt), 12 feet (7 watt), and 10 feet (10 watt). May be field cut to any length. Available in a variety of finishes and wattages, and a spectrum of color temperature options. System requires a Universal (UNI) power supply (dimmable with a Triac, electronic low voltage (ELV) or 0-10V dimmer), electronic low voltage (ELV) power supply (dimmable with an electronic low voltage (ELV) dimmer), or a 0-10V power supply (dimmable with a 0-10V dimmer), sold separately. System includes junction box, adjustable mounting bars, Reveal channel(s), power feed end cap, junction box cover, dead end cap, take-up box, drywall screws, and LED Soft Strip. Order additional Junction Box (RV-1RE-JBOX) separately to rough-in electrical wiring before drywall installation, sold separately. ETL listed. Title 24 compliant when used with a Universal (UNI) power supply. Fixture includes a 5 year pro-rated warranty. Required power supply, dimmer control and optional mounting accessories, sold separately. Product is built to order.



Shown in: White

SHADE COLOR	N/A
BODY FINISH	White
LAMP	1 x LED/2W/24V LED
WATTAGE	2W
DIMMER	Dimmable
DIMENSIONS	12"L x 4.375"W x 0.75"D

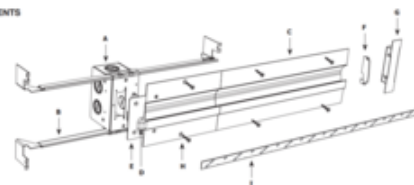
#### Technical Information

LUMINOUS FLUX	116 lumens
LUMENS/WATT	58.00
LAMP COLOR	2200 K
COLOR RENDERING	85 CRI

PRODUCT NUMBER EDG158801



#### INCLUDED COMPONENTS



- A. JUNCTION BOX**  
Mounts behind drywall with Adjustable Mounting Bars, and includes a drywall template for accurate installation. Low Voltage 24VDC wires from Remote Power Supply connect to LED wires inside box. Junction Box opening is concealed with the Reveal Junction Box cover and is required at the beginning of each run.
- B. ADJUSTABLE MOUNTING BARS**  
Provide flexibility for mounting in a variety of spaces.
- C. REVEAL CHANNEL**  
0.5" deep extrusion houses a single row of commercial-grade White or Dynamic Color Changing LED Soft Strip.
- D. POWER FEED END CAP**  
Provides a connection area for 24VDC wires at beginning of run where LED Soft Strip enters channel.
- E. JUNCTION BOX COVER**  
Conceals Junction Box opening. Required at the beginning of each run.
- F. DEAD END CAP PLATE**  
Provides a finished look and prevents light leak at head-end of run where LED Soft Strip exits channel.
- G. TAKE-UP BOX**  
Prevents dark spots at end of run by tucking excess LED Soft Strip safely behind wall.
- H. DRYWALL SCREWS**  
Secure channel to drywall and stud.
- I. LED SOFT STRIP**  
(Back Side shown) commercial-grade White or Dynamic Color Changing LED Soft Strip. See lamp data on for additional details.

COMPANY	PROJECT	FIXTURE TYPE	APPROVED BY	DATE