

# Lightology

lightology.com  
866-954-4489  
02-15-26

Project: \_\_\_\_\_  
Company: \_\_\_\_\_  
Location: \_\_\_\_\_ Fixture Type: \_\_\_\_\_  
SPEC #: **ADD18672**  
Approved On: \_\_\_\_\_ Approved By: \_\_\_\_\_

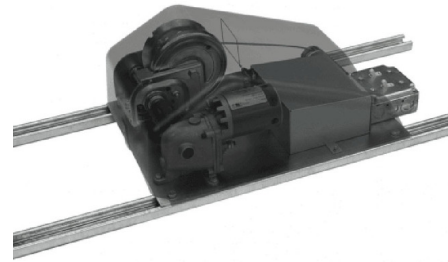
## Chandelier Lift Residential Grade Standard Mount

By Aladdin Light Lift



### Description

The Chandelier Lift Residential Grade Standard Mount features a plastic dust cover, a romex wire, a 35ft winch cable, and a 50ft controller wire. Use for maximum fixture weight of 200 lbs, 300 lbs, 700 lbs or 1000 lbs. Mounts directly above fixture (at least 3' vertical access space recommended). The options for 200 or 300 pound fixtures are mounted on two 36in channel struts and available with a Keyswitch controller and a 1650 watt capacity. The options for 700 or 1000 pound fixtures are mounted on three or four 38in channel struts available with a SmartLift controller (programmable key switch) and a 2200 watt capacity. 110 Volt. Residential Grade. UL Listed.



### Specifications

COLOR	N/A
BODY FINISH	N/A
WATTAGE	N/A
DIMMER	N/A
DIMENSIONS	14"W x 9"H x 19"D
BULB	N/A
COUNTRY OF ORIGIN	United States

### Technical Information

PRODUCT DIMENSIONS	Light Watt Capacity: 1650
--------------------	---------------------------



CLICK TO VIEW PRODUCT

Notes: