



BRAND

Lightolier by Signify

DESCRIPTION

Lytecaster 1100IC 6.75 Inch Incandescent Insulated Ceiling Frame-In Kit is made of galvanized steel. UL listed for direct contact with thermal insulation (IC designation). Accommodates all ceilings up to 1 inch thick. Four slots are positioned 90 degrees apart to simplify alignment. Push-in/twist-out rotoclips hold reflector flush to ceiling. UL listed for maximum of six No. 12 gauge 90 degree C through branch circuit conductors. Quick release cover for outside access to wiring. Mounting bars extend 13 to 27 inch rotatable and lockable with integral T-bar clips. UL listed. Suitable for damp locations. Dimensions: 15.5 inch width x 9 inch depth x 7.3 inch height. Incandescent lamping type and wattage dependent on trim kit. A complete fixture includes a frame-in kit and trim kit, sold separately.

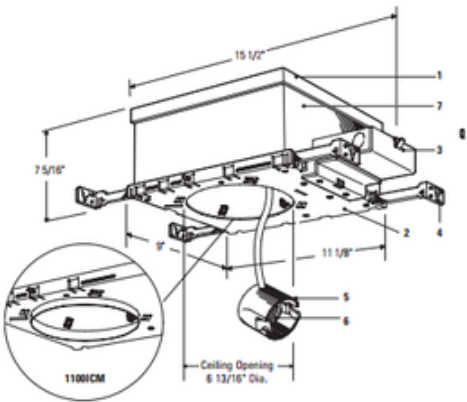


TRIM COLOR	N/A
BODY FINISH	N/A
WATTAGE	72W
DIMMER	Standard 120V
DIMENSIONS	15.5"W x 7.3"H x 9"D
BULB NOT INCLUDED	
LAMP	1 x A19/Medium (E26)/72W/120V Incandescent 1 x PAR38/Medium (E26)/120V Halogen 1 x BR40/Medium (E26)/120V Incandescent 1 x A19/Medium (E26)/120V LED

Technical Information

CEILING TYPE	Drywall with Trim
HOUSING TYPE	New construction IC
HOUSING HEIGHT	8"

SPEC #	LTL19059
--------	----------



COMPANY	PROJECT	FIXTURE TYPE	APPROVED BY	DATE