

Lightology

lightology.com
866-954-4489
07-07-25

Project: _____
Company: _____
Location: _____ Fixture Type: _____
SPEC #: **HAD21623**
Approved On: _____ Approved By: _____

DAL1 Halogen Wall Mount Decklyte

By Hadco by Signify

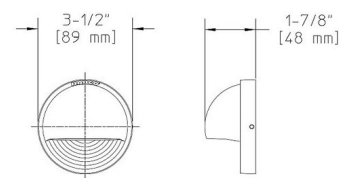


Description

DAL1 Halogen Wall Mount Decklyte features a body and mounting plate made of cast aluminum construction in thermoset polyester powdercoat Bronze or Black finish. Stainless steel fasteners. Frosted annealed glass lens with reflector in a stamped hammertone aluminum. Includes one 12 volt, 10 watt JC G4 bipin halogen lamp. Pre-wired with a 6 foot pigtail of 18-2 AWG wire. Includes low voltage quick connector LVC3 for easy hook up to the low voltage supply cable, sold separately. 3.5 inch diameter x 1.9 inch depth. ETL listed for wet locations. 5 year limited warranty. Requires 12 volt remote transformer, sold separately.



Shown in black



Specifications

COLOR	N/A
BODY FINISH	Black
WATTAGE	10W
DIMMER	Dimmable
DIMENSIONS	3.5"W x 1.9"D
BULB INCLUDED	1 x JC/G4 (bipin)/10W/12V Halogen



CLICK TO VIEW PRODUCT

Notes: