

Lightology

lightology.com
866-954-4489
08-04-25

Project: _____
Company: _____
Location: _____ Fixture Type: _____
SPEC #: **HAD21635**
Approved On: _____ Approved By: _____

DWCL2 Composite Micro Beacon Fixture

By Hadco by Signify

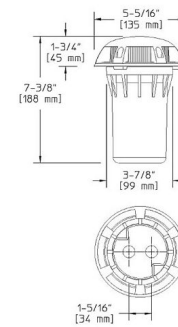


Description

DWCL2 Composite Mini Beacon Fixture is constructed from a single piece compression molded fiberglass reinforced polyester composite material that is textured, pressure formed and molded-in-color in Black. Ribbed clear acrylic optical assembly. Prewired with 3 foot pigtail of 18-2 AWG wire. Low voltage quick connector LVC3 included for easy hook up to the low voltage supply cable not included. One 20 watt T3 bipin halogen lamp included. Lower wattage lamps are acceptable. 5.3 inch diameter x 7.4 inch overall high. Requires remote transformer not included. ETL listed for wet locations.



Shown in black / clear



Specifications

COLOR	Clear
BODY FINISH	Black
WATTAGE	20W
DIMMER	Dimmable
DIMENSIONS	5.3"W x 7.4"H
BULB INCLUDED	1x T3/Bipin/20W/12V Halogen



CLICK TO VIEW PRODUCT

Notes: