

Lightology

lightology.com
866-954-4489
12-07-25

Project: _____
Company: _____
Location: _____ Fixture Type: _____
SPEC #: **EDG222921**
Approved On: _____ Approved By: _____

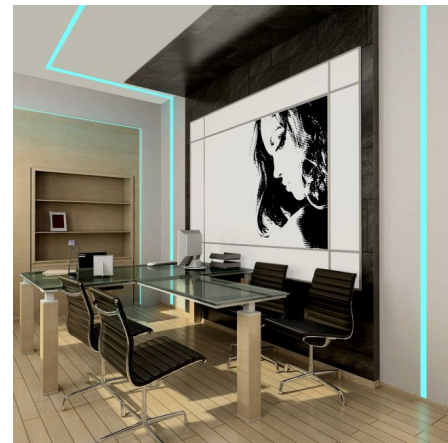
TruLine .5A 5W 24VDC RGB Plaster-In LED System

By PureEdge Lighting

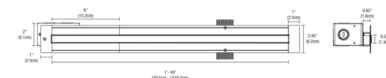


Description

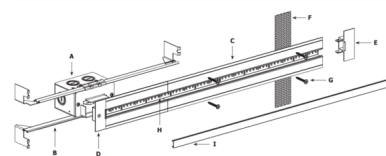
TruLine .5A RGB Plaster-In 24VDC LED system provides smooth and glare-free general illumination using designer-grade high CRI LEDs. TruLine .5A recesses within 5/8 inch drywall without any joist modification. The slim extrusions, LED strips, and lenses are available in 1 foot increments up to 20 feet (before re-feeding) and are field-cuttable. Includes 5 watts/foot LED module in RGB (Red-Green-Blue) color temperature option. Can be installed on a single surface, join runs on multiple planes from wall to ceiling, or from one wall to an adjacent wall. Use TruLine .5A Build-It-Yourself (BIY) with pre-formed components to create desired configurations including mitered picture frame and outside or inside corners for room wrapping installations. Included components: TruLine .5A channel(s), LED RGB Soft Strip, TL.5A Junction Box, Take-Up Box, Adjustable Mounting Bars, Mounting Strap, Power End Cap, Drywall Screw, and Lenses. A DMX color changing power supply is required and must be used with PureEdge controller (CDMX1-RGBW or CDP), sold separately. Note: Required power supply, dimmer/controller, and optional accessories sold separately. Product is built to order



Shown in white



INCLUDED COMPONENTS



- A. JUNCTION BOX**
Mounts behind drywall with Adjustable Mounting Bars. Low Voltage 24VDC wires from Remote Power Supply connect to LED wires inside box. Junction Box opening is covered by channel. Required at the beginning of each run and necessary for longer or electrical code TruLine installation. Junction Box is also included with each TruLine channel order.
- B. ADJUSTABLE MOUNTING BARS**
Provides flexibility for mounting in a variety of spaces and orientations. May be secured to studs that are spaced 16" - 24" apart.
- C. TRU LINE .5A CHANNEL**
5/8" deep extrusion houses single row of LED Strip.
- D. POWER END CAP**
Provides a finished look and prevents light leak at the head end of a run where LED Strip enters channel.
- E. TAKE-UP BOX**
Prevents loose wires at the end of a run by holding excess LED Strip safely behind the wall.
- F. MOUNTING STRAP**
Secures channel to drywall when wall stud is unavailable.
- G. DRYWALL SCREW**
Secures channel to drywall and stud.
- H. LED STRIP**
Your selection of LED Strip.
- I. LENS**
0.7" wide diffused white lens projects a clean line of light without LED projection.

Specifications

COLOR	N/A
BODY FINISH	White
WATTAGE	5W
DIMMER	N/A
DIMENSIONS	12"L x 2.45"W x 0.63"D
INTEGRATED LED MODULE	1 x LED/5W/24V LED



CLICK TO VIEW PRODUCT

Notes: