

# Lightology

lightology.com  
866-954-4489  
04-14-26

Project: \_\_\_\_\_  
 Company: \_\_\_\_\_  
 Location: \_\_\_\_\_ Fixture Type: \_\_\_\_\_  
 SPEC #: **JUN25654**  
 Approved On: \_\_\_\_\_ Approved By: \_\_\_\_\_

## 3.25IN Slot Angle Cut Cone Trim - Discontinued Model

By Juno Lighting

### Description

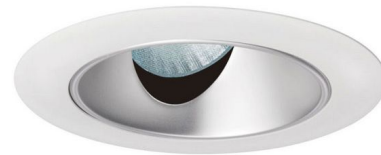
The Aculux 3ASLOT 3.25 Inch Aperture Slot Angle Cut Cone Trim is compatible with MR16, PAR, and LED housings. MR16 Housing: One 75 watt, 12 volt GU5.3 MR16 halogen lamp or LED equivalent is required, but sold separately. PAR Housing: One 50-75 watt, 120 volt PAR16 or 50 watt, 120 volt PAR20 medium base halogen lamp or LED equivalent is required, but not included. LED Housing: 27 watt, 120 volt 2000 lumen LED module included with housing. 5 inch outside diameter. 3.25 inch aperture. Lamp type and wattage dependent on housing/trim combination. A complete fixture requires a housing and trim, sold separately. Note: This is a discontinued model and limited to quantity on hand.

### Specifications

REFLECTOR/BAFFLE COLOR	N/A
BODY FINISH	White / Haze
WATTAGE	75W
DIMMER	Dimmable
DIMENSIONS	3.25"W
BULB NOT INCLUDED	1 x MR16/GU5.3 (bipin)/75W/12V Halogen
OTHER BULB OPTIONS	1 x MR16/GU5.3 (bipin)/12V LED 1 x LED/120V LED 1 x PAR16/Medium (E26)/120V Halogen 1 x PAR16/Medium (E26)/120V LED 1 x PAR20/Medium (E26)/120V Halogen 1 x PAR20/Medium (E26)/120V LED

### Technical Information

APERTURE SIZE	3.250"
APERTURE SHAPE	Round
FUNCTION	Adjustable Accent



Shown in white / haze

	<b>Construction:</b> Type IC & Non-IC
	<b>CCT/CR:</b> 827, 830, 835, 840, 930
	<b>Optic:</b> S, N, F, W
	<b>Trim Finish:</b> C, HZ, WHZ

	<b>Construction:</b> Type IC
	<b>CCT/CR:</b> 927, 930
	<b>Optic:</b> S, N, F, W
	<b>Trim Finish:</b> C, HZ, WHZ



CLICK TO VIEW PRODUCT

Notes: