



DESIGNER

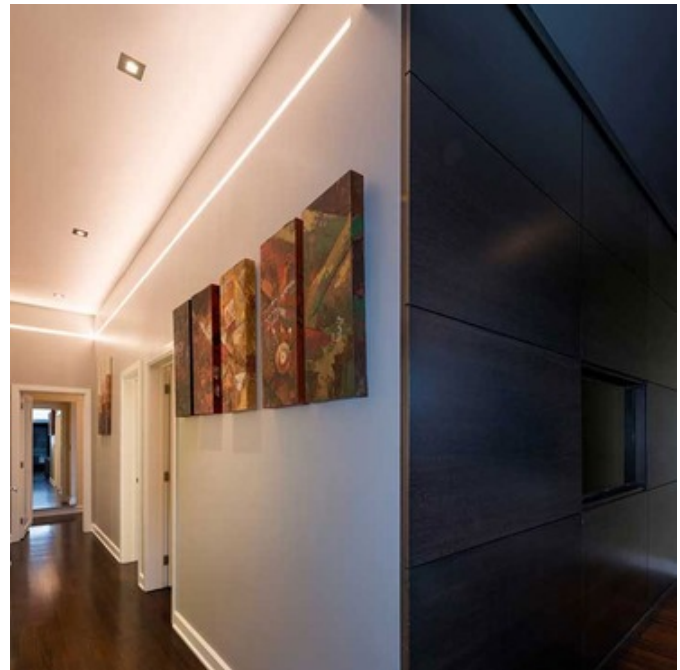
Gregory Kay

BRAND

PureEdge Lighting

DESCRIPTION

Reveal Cove/Pathway Tunable White (2K4K), a 24VDC linear LED system, features a shallow plaster-in aluminum extrusion. May be secured directly to studs without joist modification and plasters into .50 inch or thicker drywall, or between studs. Available in a variety of finishes. System requires a remote Universal (UNI) power supply (dimmmable with a Triac, electronic low voltage (ELV), or 0-10V power supply), or a 24VDC Dynamic Color Changing (DMX) Tunable White compatible power supply (controllable with a CDMX1-2XK Tunable White Touch Controller), sold separately. System includes junction box, adjustable mounting bars, Reveal channel (s), power feed end cap, junction box cover, dead end cap, take-up box, drywall screws, and LED Soft Strip. Order additional Junction Box (RV-1RE-JBOX) separately to rough-in electrical wiring before drywall installation, sold separately. ETL listed. Title 24 compliant when used with a Universal (UNI) power supply. Fixture includes a 5 year pro-rated warranty. Required power supply, dimmer control and optional mounting accessories, sold separately. Product is built to order.



SHADE COLOR	N/A
BODY FINISH	White
WATTAGE	5W
DIMMER	Dimmable
DIMENSIONS	12"L x 4.375"W x 0.75"D
INTEGRATED LED MODULE	
LAMP	1 x LED/24V LED

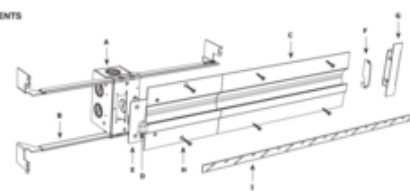
Technical Information

LUMINOUS FLUX	246 lumens
LUMENS/WATT	49.20
LAMP COLOR	Tunable White
COLOR RENDERING	90 CRI

SPEC #	EDG355891
--------	-----------



INCLUDED COMPONENTS



- A. JUNCTION BOX**
Mounts behind drywall with Adjustable Mounting Bars, and includes a drywall template for accurate installation. Low Voltage 24VDC wires from Remote Power Supply connect to LED wires inside box. Junction Box opening is concealed with the Reveal Junction Box cover and is required at the beginning of each run.
- B. ADJUSTABLE MOUNTING BARS**
Provide flexibility for mounting in a variety of spaces.
- C. REVEAL CHANNEL**
0.5" deep extrusion houses a single row of commercial-grade White or Dynamic Color Changing LED Soft Strip.
- D. POWER FEED END CAP**
Provides a connection area for 24VDC wires at beginning of run where LED Soft Strip enters channel.
- E. JUNCTION BOX COVER**
Conceals Junction Box opening. Required at the beginning of each run.
- F. DEAD END CAP PLATE**
Provides a finished look and prevents light leak at end-of run where LED Soft Strip exits channel.
- G. TAKE-UP BOX**
Prevents dark spots at end of run by tucking excess LED Soft Strip safely behind wall.
- H. DRYWALL SCREWS**
Secure channel to drywall and stud.
- I. LED SOFT STRIP**
(Back Side shown) commercial-grade White or Dynamic Color Changing LED Soft Strip. See lamp data on for additional details.

COMPANY	PROJECT	FIXTURE TYPE	APPROVED BY	DATE