



TruLine .5A Take Up Box

SPEC #

EDG356887

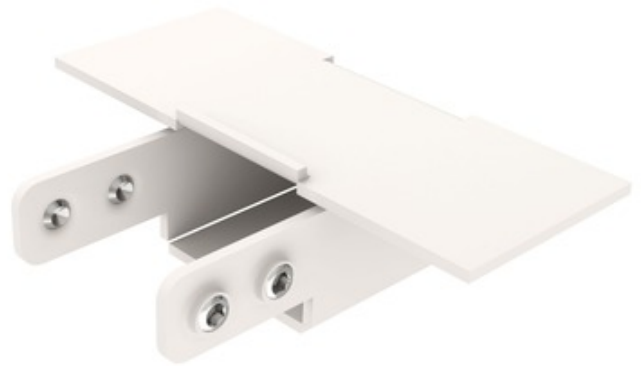


BRAND

PureEdge Lighting

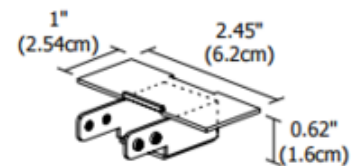
DESCRIPTION

TruLine .5A Take-Up Box prevents dark spots at end of run by tucking excess LED Soft Strip behind wall. LED Soft Strip sold separately. Includes Channel Joiners. ETL listed. Designed for use with Pure Lighting TruLine .5A plaster-in LED system.



Shown in: White

SHADE COLOR	N/A
BODY FINISH	White
WATTAGE	N/A
DIMMER	N/A
DIMENSIONS	2.45"W x 0.62"H x 1"D
LAMP	N/A



SPEC #

EDG356887

COMPANY

PROJECT

FIXTURE TYPE

APPROVED BY

DATE _____