

Lightology

lightology.com
866-954-4489
04-26-26

Project: _____
 Company: _____
 Location: _____ Fixture Type: _____
 SPEC #: **ELE360844**
 Approved On: _____ Approved By: _____

Element 3IN RD Flanged Adjustable New Construction Housing By Visual Comfort Architectural



Description

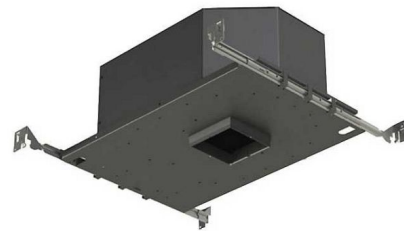
3 Inch Round 90CRI Adjustable Downlight Non-IC, IC or Chicago Plenum New Construction Housing for round flanged trims. This small aperture LED downlight is fully adjustable and the design allows the LED to be positioned closer to the aperture for maximum light output and efficiency, or higher to minimize glare on the trim. Additional adjustability allows for tool-free hot aiming and locking, including 0 to 40 degree tilt and 361 degree rotation to eliminate dead spots. Includes 12 or 17 watt LED modules and a choice of 2700K, 3000K or 3500K color temperature and 10, 15, 25, 40 or 60 degree beam angle. 3 7/8 inch ceiling opening. Suitable for damp locations. Suitable for wet locations with shower trim option. Includes a 120-277V Universal driver dimmable with standard reverse-phase, forward-phase, TRIAC, and 0-10V dimming. Note: A complete fixture requires a housing and trim, sold separately. Note: Warm Dim option is not available with 10 degree beam angle.

Specifications

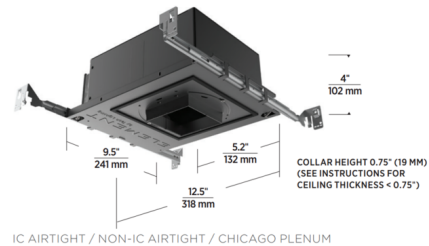
REFLECTOR/BAFFLE COLOR	N/A
BODY FINISH	Black Powder Coat
WATTAGE	17W
DIMMER	Low Voltage Electronic
DIMENSIONS	9.5"W x 4"H x 5.2"D
INTEGRATED LED MODULE	1 x LED/17W/120-277V LED

Technical Information

APERTURE SHAPE	Round
HOUSING HEIGHT	4"
HOUSING TYPE	New construction IC Airtight
CEILING TYPE	Drywall with Trim
FUNCTION	Adjustable Accent
LAMP LIFE	50000 hours
BEAM ANGLE	18°
COLOR RENDERING	90 CRI
LAMP COLOR	2700K
LUMENS/WATT	86.82
LUMINOUS FLUX	1476 lumens



Shown in black powder coat



CLICK TO VIEW PRODUCT

Notes: