

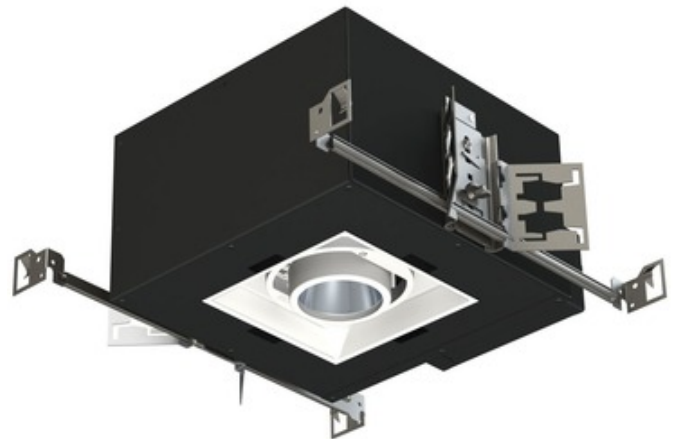


BRAND

Contrast Lighting

DESCRIPTION

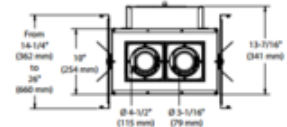
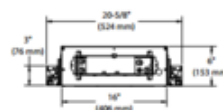
Modul Aim 1-Light Electronic Low Voltage Dim IC New Construction Assembled Housing with 32 Degree Beam Angle features a powder coated 22 gauge galvanized steel housing to fit in ceilings up to 1 inch thick. Available in Matte White or Matte Black. IC rated for direct contact with insulation. Swivels 359 degrees and tilts 40 degrees with a one screw locking device to lock both axis in position. Includes 20 watts LED with choice of 2700K Very Warm White, 3000K Warm White, 3500K Neutral White or 4000K Cool White color temperature, 90+ CRI. Features Lumileds Luxeon CoB 1205 LED engine, delivering approximately 63 lumens per watt with a lumen maintenance greater than 70 percent after 50,000 hours of operation. Optical reflectors available in 15 degree spot, 19 degree medium spot, 32 degree narrow flood and 45 degree wide flood. UL listed for damp locations. Energy Star certified. 5 year warranty on LED module and driver. 6.25 inch x 6.25 inch ceiling cut-out. 14 5/8 inch length x 13.43 inch width x 6 inch height housing. Available in a with trim option, offered in three finishes, or a trimless option requiring a mesh plate, sold separately. Mask accessory available to conceal interior to give a more finished look, sold separately. Dimmable with an electronic low voltage dimmer-see attached Performance 1 manufacturer dimmer compatibility recommendations. Required trim, trimless mesh plate, mask and dimmer control sold separately.



TRIM COLOR	N/A
BODY FINISH	Matte White
WATTAGE	20W
DIMMER	Low Voltage Electronic
DIMENSIONS	14.62"L x 13.43"W x 6"H
INTEGRATED LED MODULE	
LAMP	1 x LED/120V LED

Technical Information

LUMINOUS FLUX	1189 lumens
LUMENS/WATT	59.45
LAMP COLOR	2700K
COLOR RENDERING	90 CRI
BEAM ANGLE	32°
LAMP LIFE	50000 hours
FUNCTION	Adjustable Accent
HOUSING TYPE	New construction IC
HOUSING HEIGHT	6"
SPEC #	CLT371720



COMPANY

PROJECT

FIXTURE TYPE

APPROVED BY

DATE