

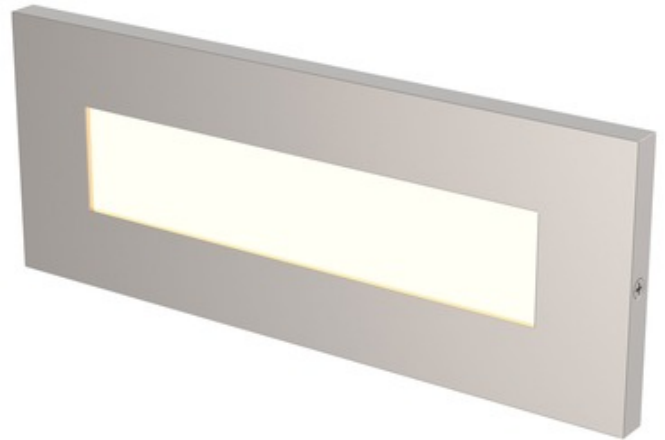


BRAND

Generation Lighting

DESCRIPTION

The Vitra LED Step Light is available in White, Bronze, or Satin Nickel die-cast metal and may be used in interior or exterior applications. Can also be used to accent pathways or corridors, blending the latest LED light guide technology with high quality craftsmanship and beautiful design. To optimize light output, housings feature purpose-built LED light guides to push light for area illumination as close to the wall as possible. Installs into a single gang metal or plastic switch box with a minimum 2 inch depth.



Shown in: Satin Nickel

SHADE COLOR	N/A
BODY FINISH	Satin Nickel
WATTAGE	8.6W
DIMMER	Low Voltage Electronic
DIMENSIONS	7.9"W x 2.4"H
INTEGRATED LED MODULE	
LAMP	1 x LED/8.6W/120V LED

Technical Information

LUMINOUS FLUX	300 lumens
LUMENS/WATT	34.88
LAMP COLOR	3000K
COLOR RENDERING	90 CRI

SPEC # SGL403000

COMPANY	PROJECT	FIXTURE TYPE	APPROVED BY	DATE