

# Lightology

lightology.com  
866-954-4489  
05-16-26

Project: \_\_\_\_\_

Company: \_\_\_\_\_

Location: \_\_\_\_\_ Fixture Type: \_\_\_\_\_

SPEC #: **WAC452903**

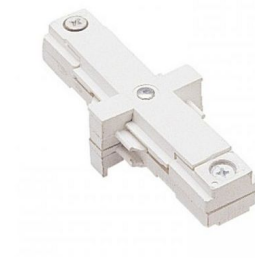
Approved On: \_\_\_\_\_ Approved By: \_\_\_\_\_

## J2 Series 2 Circuit Dead End I Connector By WAC Lighting



### Description

J2 Series 2 Circuit Dead End I Connector is used to join two sections of track without electrical continuity. Finish available in White or Black. 1.38 inch width x 0.75 inch height x 3.5 inch length. For use with WAC Lighting J2 Series 120 volt two circuit track.



Shown in white

### Specifications

|                   |                         |
|-------------------|-------------------------|
| COLOR             | N/A                     |
| BODY FINISH       | White                   |
| WATTAGE           | N/A                     |
| DIMMER            | N/A                     |
| DIMENSIONS        | 3.5"L x 1.38"W x 0.75"H |
| BULB              | N/A                     |
| COUNTRY OF ORIGIN | China                   |



CLICK TO VIEW PRODUCT

Notes: