

# Lightology

lightology.com  
866-954-4489  
04-02-26

Project: \_\_\_\_\_

Company: \_\_\_\_\_

Location: \_\_\_\_\_ Fixture Type: \_\_\_\_\_

SPEC #: **EUF543178**

Approved On: \_\_\_\_\_ Approved By: \_\_\_\_\_

## New Construction Mounting Plate By Eurofase



### Description

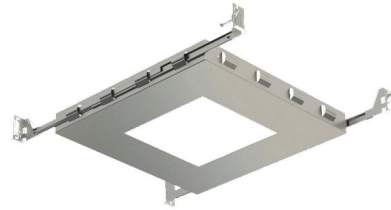
4 Inch Aperture Non-IC New Construction Mounting Plate for use with multiples remodel housings with trim, sold separately. Non-IC designation requires that insulation be kept a minimum of 3 inches away from housing. 6-7 inch height paired with remodel housing. Available in a 1, 2, 3, and 4 light option. Mounting plate, when paired with a multiples remodel housing and trim, can be used for Non-IC new construction applications.

### Specifications

REFLECTOR/BAFFLE COLOR . . . . . N/A  
BODY FINISH . . . . . Steel  
WATTAGE . . . . . N/A  
DIMMER . . . . . N/A  
DIMENSIONS . . . . . 9.25"W x 1.38"H x 9.25"D  
BULB . . . . . N/A  
COUNTRY OF ORIGIN . . . . . Canada

### Technical Information

APERTURE SIZE . . . . . 6.000"  
APERTURE SHAPE . . . . . Square  
HOUSING HEIGHT . . . . . 6"  
HOUSING TYPE . . . . . New Construction NON IC  
CEILING TYPE . . . . . Drywall with Trim



Shown in steel



CLICK TO VIEW PRODUCT

Notes: