

Lightology

lightology.com
866-954-4489
05-08-26

Project: _____

Company: _____

Location: _____ Fixture Type: _____

SPEC #: **EUF543343**

Approved On: _____ Approved By: _____

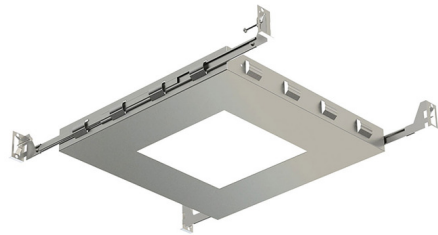
Amigo 3IN SQ New Construction Mounting Plate

By Eurofase



Description

30535 3 Inch Square Aperture Non-IC New Construction Mounting Plate for use with 120 volt LED lamp type remodel housings with trim, sold separately. Non-IC designation requires that insulation be kept a minimum of 3 inches away from housing. 6 inch height paired with remodel housing. 3.25 inch square cutout.



Shown in steel

Specifications

REFLECTOR/BAFFLE COLOR N/A
BODY FINISH Steel
WATTAGE 15W
DIMMER N/A
DIMENSIONS 11"W x 1.38"H x 9"D
BULB NOT INCLUDED 1 x LED/15W/120V LED
COUNTRY OF ORIGIN Canada

Technical Information

APERTURE SIZE 3.000"
APERTURE SHAPE Square
HOUSING HEIGHT 6"
HOUSING TYPE New Construction NON IC
CEILING TYPE Drywall with Trim



CLICK TO VIEW PRODUCT

Notes: