

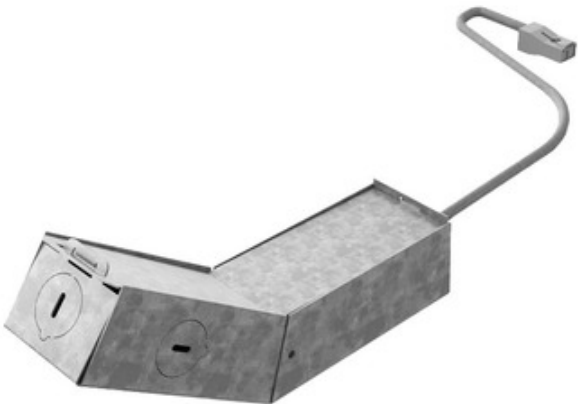


BRAND

Contrast Lighting

DESCRIPTION

The Ardito 3.5 Inch Series Remodel Housing is constructed of galvanized steel and is below ceiling accessible. Non-IC designation requires that insulation material must be kept at least 3 inches away from housing. May be used with round or square trim modules. Housing available in a Performance 1 (14 Watt up to 1450 lumens) or Performance 2 (23 watt up to 2050 lumens) LED driver. Universal 120-277V. May be dimmed with an electronic low voltage (120V only) or 0-10V dimmer (120-277V volt), sold separately. See trim for dimmer compatibility. 5 year warranty on LED driver. A complete fixture includes a housing and trim, sold separately. Mounting plate option available in round or square (PA3RNW or PA3SNW), sold separately. See trim module for required clearance beyond the ceiling.

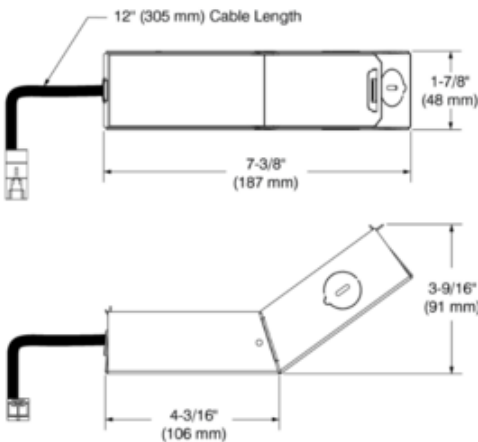


TRIM COLOR	N/A
BODY FINISH	Galvanized Steel
WATTAGE	14W
DIMMER	Dimmable
DIMENSIONS	7.38"W x 3.56"H x 1.88"D
BULB NOT INCLUDED	
LAMP	1 x LED/14W/120V LED

Technical Information

LUMINOUS FLUX	1450 lumens
LUMENS/WATT	103.57
HOUSING TYPE	Remodel NON IC
HOUSING HEIGHT	4"

SPEC #	CLT558827
--------	-----------



COMPANY	PROJECT	FIXTURE TYPE	APPROVED BY	DATE