

Lightology

lightology.com
866-954-4489
08-04-25

Project: _____
Company: _____
Location: _____ Fixture Type: _____
SPEC #: **MDF579811**
Approved On: _____ Approved By: _____

Stella Ceiling Fan with Light

By Modern Fan Co.



Description

The Stella Ceiling Fan with Light is unique with its beehive appearance. Constructed of die cast aluminum and stamped steel with plywood veneer blades and steel posts. 153mm x 18mm AC motor with reverse switch on fan body. Slope compatible up to 33 degrees; adapter available for slopes up to 45 degrees sold separately. Includes one 4.5 inch and one 10 inch downrod. Control options: 002 Control which provides fan operation only with four speeds and dimming function for light (requires 3 wires) 003 Control which provides three speeds and choice of on/off or dimming light function, and comes with a handset, wall mounted holder, and RF receiver 004 Wall Control provides three speeds and choice of on/off or dimming light function (two wires), and comes with switch, switch plate and RF receiver 005 Control - a wall/remote combo which includes the 003 handset, 004 wall switch, wall mounted holder, and RF receiver.

Specifications

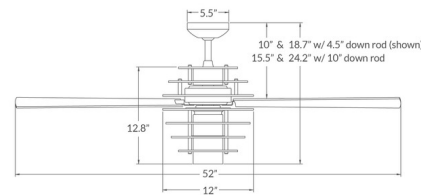
BLADE COLOR Maple Blades
BODY FINISH Dark Bronze Body / Maple Details
WATTAGE 17.5W
DIMMER Included
DIMENSIONS 52"W x 24.2"H
BULB INCLUDED 1 x A19/Medium (E26)/17.5W/120V LED
COUNTRY OF ORIGIN Chinese Taipei

Technical Information

LAMP LIFE 25000 hours
COLOR RENDERING 80 CRI
LAMP COLOR 3000K
LUMENS/WATT 91.43
LUMINOUS FLUX 1600 lumens



Shown in dark bronze body / maple details / maple blades



CLICK TO VIEW PRODUCT

Notes: