



DESIGNER

Sean Lavin

BRAND

Visual Comfort Modern

DESCRIPTION

The Ash Outdoor Wall Sconce with Clear Cylinder is a modern take on the classic industrial style light fixture. It features a sleek metal shade and clear cylinder diffuser, ideal for spreading clean ambient light. Its die-cast aluminum construction, powder coat finish, and impact-resistant UV-stabilized clear acrylic ensure durability against harsh outdoor elements. The light is an energy-efficient integrated LED module, and a universal 120-277V driver with integrated transient 2.5 kV surge protection is included. Dimmable with an ELV or 1-10V dimmer. Four option selections are available: button photocontrol, surge protection, both the photocontrol and surge protection, or no options.



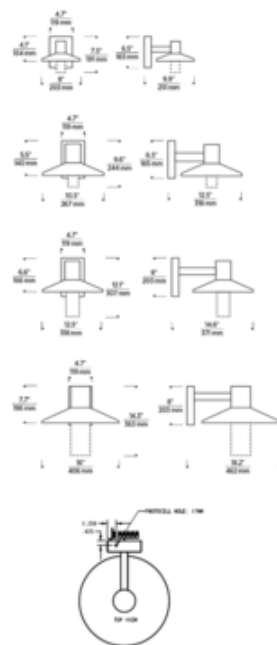
Shown in: Bronze / Clear

SHADE COLOR	Clear
BODY FINISH	Bronze
WATTAGE	8W
DIMMER	Low Voltage Electronic
DIMENSIONS	8"W x 7.5"H x 9.9"D
INTEGRATED LED MODULE	
LAMP	1 x LED/8W/120-277V LED

Technical Information

LUMINOUS FLUX	515 lumens
LUMENS/WATT	64.38
LAMP COLOR	2700K
COLOR RENDERING	90 CRI

SPEC # TLG604326



COMPANY	PROJECT	FIXTURE TYPE	APPROVED BY	DATE