

Lightology

lightology.com
866-954-4489
07-16-25

Project: _____
Company: _____
Location: _____ Fixture Type: _____
SPEC #: **EMR615367**
Approved On: _____ Approved By: _____

Integrity Rectangle Lighted Mirror

By Electric Mirror



Description

The Integrity Rectangle Lighted Mirror is designed to maximize direct illumination. Ideal for precision tasks such as makeup application and shaving. White powder coated chasis for finished side view. Available in a variety of sizes with standard or Ava control options. Standard control option allows for control with an on/off switch or forward phase dimming switch. Ava may be controlled by an external on/off light switch or with the Ava touch control located near the bottom of the mirror. Ava Smart Look technology features tunable white LED lights that allow you to select the color temperature. Select between 6500K for a day of outdoor activities, 4600K for your daily routine, or 2700K for a night out on the town. Tap to Cycle through 2700K, 4600K, 6500K, Night Glow and Off. At every level, hold to dim down to 10%. After one hour of non-use, Energy Save Mode automatically dims lights to 10%. Note: The Integrity mirror must be installed in the W x H (width x height) orientation as listed; it cannot be installed in any other direction.

Specifications

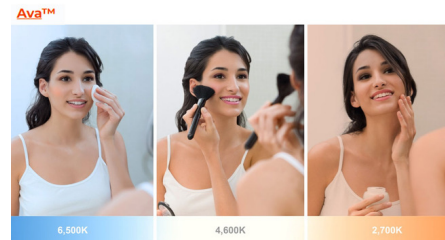
COLOR Mirror
BODY FINISH N/A
WATTAGE 53W
DIMMER Included
DIMENSIONS 24"W x 36"H x 1.75"D
INTEGRATED LED MODULE 1 x LED/53W/120V LED
COUNTRY OF ORIGIN United States

Technical Information

LAMP LIFE 52000 hours
COLOR RENDERING 90 CRI
LAMP COLOR Tunable White
LUMENS/WATT 75.40
LUMINOUS FLUX 3996 lumens



Shown in mirror



CLICK TO VIEW PRODUCT

Notes: