

Lightology

lightology.com
866-954-4489
12-28-25

Project: _____
Company: _____
Location: _____ Fixture Type: _____
SPEC #: **EDG627153**
Approved On: _____ Approved By: _____

Glide Wood Up/Down Warm Dim End Feed Suspension

By PureEdge Lighting



Description

Glide Wood Up/Down Warm Dim End Feed Suspension is a linear LED fixture that offers direct and indirect light in a clean, contemporary style. Available with one or two canopies. Downlight features a diffused white lens with 100 degree beam spread and optional black or white louvers for adjustability. Uplight features a clear frosted 60 degree lens. Available in 27D (2700K to 2000K) and 30D (3000K to 2000K) Warm Dim color temperatures. Wood available in Walnut, Cherry, Maple, White Oak or Espresso. Channel widths sold in 12 inch increments from 36 to 120 inches with 10 watts (5 watts up/5 watts down) per foot. Supplied with 12 feet of adjustable coaxial cables (fixtures exceeding 96 inch include additional aircraft cables). 120 volt input, 24VDC Class 2 output, electronic low voltage LED power supply included in canopy. Dimmable with an electronic low voltage dimmer: (Lutron Diva DVELV-300P, Lutron Skylark SELV-300P, Lutron Maestro MAELV-600 and Lutron Radio Ra 2, or Legrand Adorne ADTP703TU), sold separately. 5 year warranty. Product is built to order.

Specifications

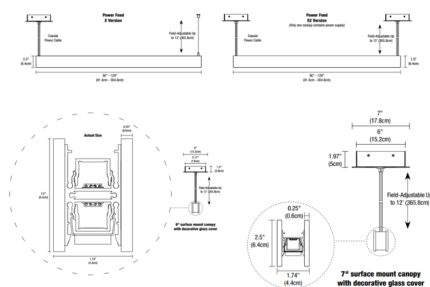
COLOR No Louver
BODY FINISH Wood Walnut
WATTAGE 30W
DIMMER Low Voltage Electronic
DIMENSIONS 36"L x 1.74"W x 2.5"H
INTEGRATED LED MODULE 3 x LED/10W/120V LED

Technical Information

LAMP LIFE 50000 hours
COLOR RENDERING 92 CRI
LAMP COLOR 2700K Warm Dim
LUMENS/WATT 170.70
LUMINOUS FLUX 1707 lumens



Shown in wood walnut / no louver



Model	4' (1219mm)	6' (1829mm)
180° LED module	4' x 1.74" x 2.5"	6' x 1.74" x 2.5"
180° LED module	4' x 1.74" x 2.5"	6' x 1.74" x 2.5"
180° LED module	4' x 1.74" x 2.5"	6' x 1.74" x 2.5"



CLICK TO VIEW PRODUCT

Notes: