

# Lightology

lightology.com  
866-954-4489  
04-22-26

Project: \_\_\_\_\_  
 Company: \_\_\_\_\_  
 Location: \_\_\_\_\_ Fixture Type: \_\_\_\_\_  
 SPEC #: **EDG627741**  
 Approved On: \_\_\_\_\_ Approved By: \_\_\_\_\_

## Glide Glass Up/Down End Feed Suspension By PureEdge Lighting



### Description

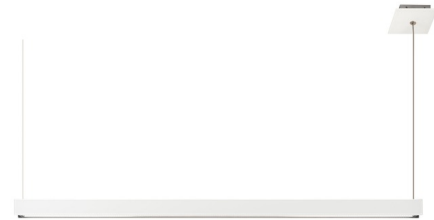
Glide Glass Up/Down End Feed Suspension is a linear LED fixture that offers direct light in a clean, contemporary style. Offered with one or two canopies. Downlight features a diffused white lens with 100 degree beam spread and optional black or white louvers for adjustability. Uplight features a clear frosted 60 degree lens. Glass available in Black, White or Mirror. Channel widths sold in 12 inch increments from 36 to 120 inches with 7 (2 watts up/5 watts down), 10 (5 watts up/5 watts down), or 12 watts (5 watts up/7.5 watts down) per foot. Available in seven color temperature options including Warm Dim. Supplied with 12 feet of adjustable coaxial cables (fixtures exceeding 96 inch include additional aircraft cables). 120 volt input, 24VDC Class 2 output, electronic low voltage LED power supply included in canopy. Dimmable with an electronic low voltage dimmer: (Lutron Diva DVELV-300P, Lutron Skylark SELV-300P, Lutron Maestro MAELV-600 and Lutron Radio Ra 2, or Legrand Adorne ADTP703TU), sold separately. 5 year warranty. Product is built to order.

### Specifications

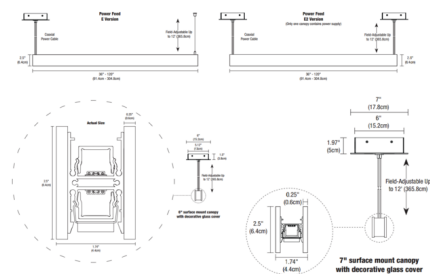
COLOR . . . . . No Louver  
 BODY FINISH . . . . . White Glass  
 WATTAGE . . . . . 21W  
 DIMMER . . . . . Low Voltage Electronic  
 DIMENSIONS . . . . . 36"L x 1.74"W x 2.5"H  
 INTEGRATED LED MODULE . . . . . 3 x LED/7W/120V LED

### Technical Information

LAMP LIFE . . . . . 50000 hours  
 COLOR RENDERING . . . . . 95 CRI  
 LAMP COLOR . . . . . 2700K  
 LUMENS/WATT . . . . . 171.00  
 LUMINOUS FLUX . . . . . 1197 lumens



Shown in white glass / no louver



Series	LED Power	LED Power
10 LED Canopy	10 x 10"	10
100 LED Canopy	10 x 10"	100
100 LED Canopy	10 x 10"	100



CLICK TO VIEW PRODUCT

Notes: