



DESIGNER

Gregory Kay

BRAND

PureEdge Lighting

DESCRIPTION

Glide Wood Up/Down End Feed Suspension is a linear LED fixture that offers direct and indirect light in a clean, contemporary style. Available with one or two canopies. Downlight features a diffused white lens with 100 degree beam spread and optional black or white louvers for adjustability. Uplight features a clear frosted 60 degree lens. Available in seven color temperature options. Channel widths sold in 12 inch increments from 36 to 120 inches with 7 (2 watts up/5 watts down), 10 (5 watts up/5 watts down), or 12 watts (5 watts up/7.5 watts down) per foot. Supplied with 12 feet of adjustable coaxial cables (fixtures exceeding 96 inch include additional aircraft cables). 120 volt input, 24VDC Class 2 output, electronic low voltage LED power supply included in canopy. Dimmable with an electronic low voltage dimmer: (Lutron Diva DVELV-300P, Lutron Skylark SELV-300P, Lutron Maestro MAELV-600 and Lutron Radio Ra 2, or Legrand Adorne ADTP703TU), sold separately. Uplight and downlight can be individually dimmed using two electronic low voltage dimmers. 5 year warranty. Product is built to order.



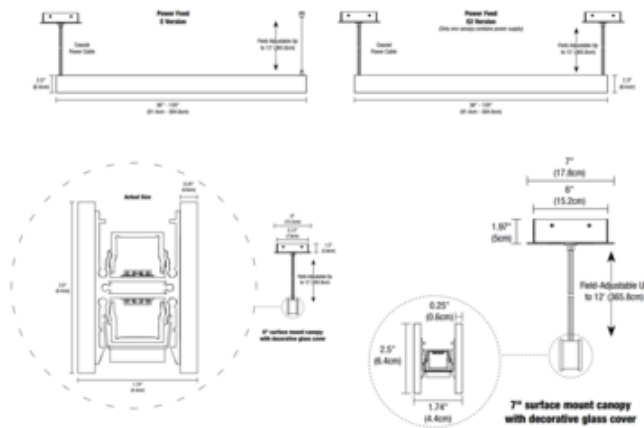
Shown in: Wood Walnut / No Louver

SHADE COLOR	No Louver
BODY FINISH	Wood Walnut
WATTAGE	21W
DIMMER	Low Voltage Electronic
DIMENSIONS	36"L x 1.74"W x 2.5"H
INTEGRATED LED MODULE	
LAMP	3 x LED/7W/120V LED

Technical Information

LUMINOUS FLUX	1197 lumens
LUMENS/WATT	171.00
LAMP COLOR	2700K
COLOR RENDERING	95 CRI

SPEC # EDG627745



Model	4" Canopy (Surface Mount)	7" Canopy (Surface Mount)
36" L Length	48" x 10"	60" x 10"
48" L Length	60" x 10"	72" x 10"
60" L Length	72" x 10"	84" x 10"

COMPANY	PROJECT	FIXTURE TYPE	APPROVED BY	DATE