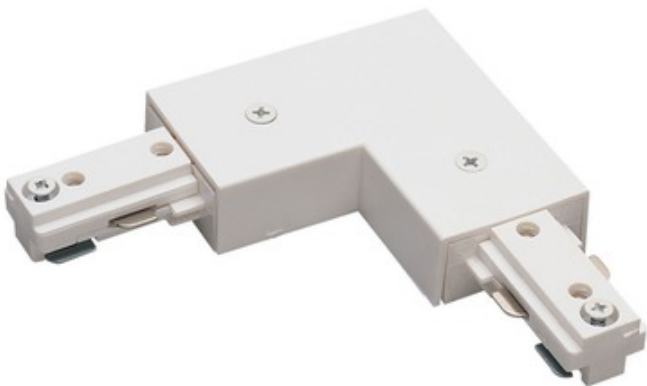




BRAND Nora Lighting

DESCRIPTION

The NT-300 Series L-Connector is used to connect two pieces of track together in a right angle and carry the electricity. Can be used as a power feed with one knockout. Can be adjusted to accommodate left and right polarity. Includes I-Connector cover to convert into straight connector.



Shown in: White

SHADE COLOR	N/A
BODY FINISH	White
WATTAGE	N/A
DIMMER	N/A
DIMENSIONS	2.75"W x 0.7"H x 2.75"D
LAMP	N/A
SPEC #	NOR676752

COMPANY	PROJECT	FIXTURE TYPE	APPROVED BY	DATE