

Lightology

lightology.com
866-954-4489
07-07-26

Project: _____

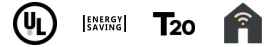
Company: _____

Location: _____ Fixture Type: _____

SPEC #: **ACC814177**

Approved On: _____ Approved By: _____

Boulder Multi Light Pendant By Access

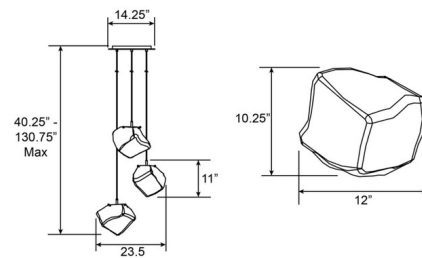


Description

The Boulder Multi Light Pendant offers a chic look inspired by nature, featuring three organic shaped Clear glass shades suspended from a Mirrored Stainless Steel finished canopy that also has an organic form. Recommended dimmers: (ELV) Lutron Skylark SELV-300P, (TRIAC) Legrand Titan CD703-PW. Title 20 compliant. UL and cUL listed. Suitable for commercial or residential use.



Shown in mirrored stainless steel / clear



Specifications

COLOR	Clear
BODY FINISH	Mirrored Stainless Steel
WATTAGE	15W
DIMMER	Low Voltage Electronic
DIMENSIONS	130.75"L x 23.5"W x 40.25"H
BULB INCLUDED	3 x A19/Medium (E26)/5W/120V LED
COUNTRY OF ORIGIN	China

Technical Information

LAMP COLOR	2200K
LUMENS/WATT	228.00
LUMINOUS FLUX	1140 lumens



CLICK TO VIEW PRODUCT

Notes: