



lightology.com  
866-954-4489  
07-03-25

Project: _____	
Company: _____	
Location: _____	Fixture Type: _____
SPEC #: <b>NOR866581</b>	
Approved On: _____	Approved By: _____

## NL Series 3IN 12V MLV New Construction Non-IC Housing

By Nora Lighting



### Description

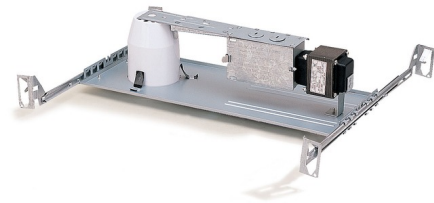
The 3 Inch Low Voltage New Construction Non-IC Housing is constructed of one piece steel and allows for ceiling thickness 5/8 inch only. Non-IC housings require a minimum clearance of 3 inches from thermal insulation. 120V input/12V output for use with 12 volt, 10-50 watt GU5.3 MR16 halogen (or LED equivalent) lamps, sold separately. Not suitable for use with Sora LED lamps. Includes magnetic 12 volt output transformer, dimmable with a low voltage magnetic dimmer, sold separately. UL listed for damp locations. Wet location listed when used with compatible reflector. Meets or exceeds ASTM-283 Air-Tight requirements. Note: A complete fixture includes a housing and trim, sold separately.

### Specifications

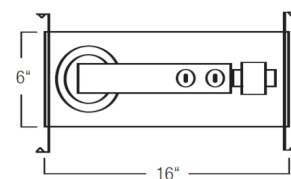
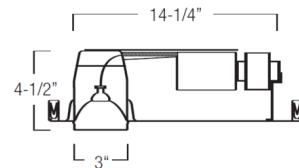
REFLECTOR/BAFFLE COLOR	N/A
BODY FINISH	Galvanized Steel
WATTAGE	50W
DIMMER	Low Voltage Magnetic
DIMENSIONS	16"W x 4.5"H x 6"D
BULB NOT INCLUDED	1 x MR16/GU5.3 (bipin)/50W/12V Halogen
OTHER BULB OPTIONS	MR16/GU5.3 (bipin)/12V LED

### Technical Information

APERTURE SIZE	3.000"
APERTURE SHAPE	Round
HOUSING HEIGHT	5"
HOUSING TYPE	New construction NON IC Airtight
CEILING TYPE	Drywall with Trim



Shown in galvanized steel



CLICK TO VIEW PRODUCT

Notes: