

Lightology

lightology.com
866-954-4489
02-14-26

Project: _____
Company: _____
Location: _____ Fixture Type: _____
SPEC #: **PGS871553**
Approved On: _____ Approved By: _____

Adley Wall Sconce By Progress Lighting



Description

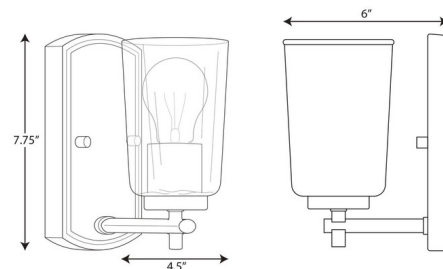
The Adley Wall Sconce has traditional styling with a modern twist making it a perfect choice for adding ambient lighting to your space. This simple yet sophisticated look make it welcome in baths, hallways, stairwells or entryways. The backplate features graceful, beveled detailing and is attached to a simple bar holding the Clear glass diffuser. Choice of Polished Nickel, Black, Brushed Nickel or Satin Brass finish. Fixture can be installed with the shade facing up or down. UL/CUL listed. Suitable for damp locations.

Specifications

| | |
|--------------------|---|
| COLOR | Clear |
| BODY FINISH | Brushed Nickel |
| WATTAGE | 8W |
| DIMMER | Standard 120V |
| DIMENSIONS | 4.5"W x 7.75"H x 6"D |
| BULB NOT INCLUDED | 1 x A19/Medium (E26)/8W/120V LED |
| OTHER BULB OPTIONS | 1 x A19/Medium (E26)/120V LED 1 x A19/Medium (E26)/60W/120V Incandescent |
| COUNTRY OF ORIGIN | China |



Shown in brushed nickel / clear



CLICK TO VIEW PRODUCT

Notes: