

Lightology

lightology.com
866-954-4489
04-24-26

Project: _____
 Company: _____
 Location: _____ Fixture Type: _____
 SPEC #: **ELE936441**
 Approved On: _____ Approved By: _____

Element 4IN RD Flangeless Adjustable Shallow Non-IC Housing By Visual Comfort Architectural



Description

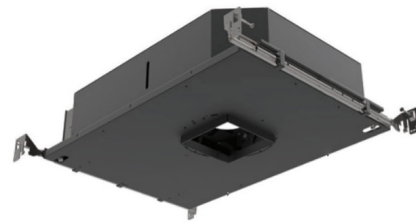
The 4 Inch Round Flangeless Adjustable Shallow Non-IC Airtight Housing is constructed of heavy gauge cold rolled steel with a durable Matte Black powder coat finish. Non-IC designation requires that insulation be kept a minimum of 3 inches away from housing. This specification grade housing includes a low output 17 watt or high output 31 watt LED module with 10 or 60 degree beam angle option. Features high-low lamp positioning. Adjustability allows for tool-free hot aiming and locking including 0 to 40 degree tilt and 361 degree rotation. 4.5 inch ceiling opening. Dimmable down to 5 percent with an electronic low voltage (ELV) or 1 percent with a 0-10V dimmer, sold separately. A complete fixture includes a housing and trim, sold separately. Note: Limited options available.

Specifications

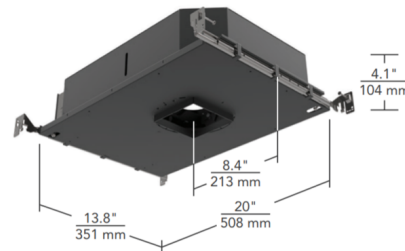
REFLECTOR/BAFFLE COLOR	N/A
BODY FINISH	Matte Black
WATTAGE	31W
DIMMER	Low Voltage Electronic
DIMENSIONS	20"L x 13.8"W x 4.1"H
INTEGRATED LED MODULE	1 x LED/31W/120V LED

Technical Information

APERTURE SIZE	8.000"
APERTURE SHAPE	Round
HOUSING HEIGHT	4"
HOUSING TYPE	New construction NON IC Airtight
CEILING TYPE	Drywall Trimless/Flush
FUNCTION	Adjustable Accent
BEAM ANGLE	60°
COLOR RENDERING	90 CRI
LAMP COLOR	3000K Warm Dim
LUMENS/WATT	106.45
LUMINOUS FLUX	3300 lumens



Shown in matte black



CLICK TO VIEW PRODUCT

Notes: