

# Lightology

lightology.com  
866-954-4489  
05-22-26

Project: \_\_\_\_\_  
 Company: \_\_\_\_\_  
 Location: \_\_\_\_\_ Fixture Type: \_\_\_\_\_  
 SPEC #: **ELE941421**  
 Approved On: \_\_\_\_\_ Approved By: \_\_\_\_\_

## Element 3IN RD Flanged Dual Adj New Construction Housing By Visual Comfort Architectural



### Description

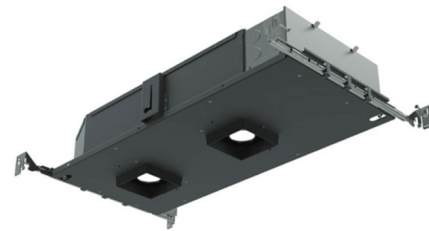
3 Inch Round 90CRI Flanged Dual Adjustable Non IC Airtight, IC Airtight, or Chicago Plenum New Construction Housing for round flanged trims features two closely spaced independently adjustable downlights. Offered with lockable, hot aiming with 0-40 degree tilt and 361 degree rotation ability. Includes two 12 or 17 watt LED modules in 2700K, 3000K or 3500K color temperature options or Warm Dim LED (3000K-1800K). Offered with a 10, 18, 25, 40 or 60 degree beam angle. 3 7/8 inch ceiling opening. Suitable for damp locations. Suitable for wet locations with shower trim option. Includes a 120-277V Universal driver dimmable with standard reverse-phase, forward-phase, TRIAC, and 0-10V dimming. Note: A complete fixture requires a housing and two trims, sold separately. Note: Warm Dim option is not available with 10 degree beam angle.

### Specifications

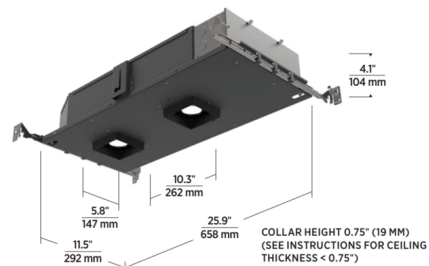
REFLECTOR/BAFFLE COLOR	N/A
BODY FINISH	Black Powder Coat
WATTAGE	24W
DIMMER	Low Voltage Electronic
DIMENSIONS	25.9"L x 11.5"W x 4.1"H
INTEGRATED LED MODULE	2 x LED/12W/120-277V LED

### Technical Information

APERTURE SHAPE	Round
HOUSING HEIGHT	4"
HOUSING TYPE	New construction NON IC Airtight
CEILING TYPE	Drywall with Trim
FUNCTION	Adjustable Accent
LAMP LIFE	50000 hours
BEAM ANGLE	60°
COLOR RENDERING	90 CRI
LAMP COLOR	3000K Warm Dim
LUMENS/WATT	150.00
LUMINOUS FLUX	1800 lumens



Shown in black powder coat



IC AIRTIGHT / NON-IC AIRTIGHT / CHICAGO PLENUM



CLICK TO VIEW PRODUCT

Notes: