

# Lightology

lightology.com  
866-954-4489  
05-22-26

Project: \_\_\_\_\_  
 Company: \_\_\_\_\_  
 Location: \_\_\_\_\_ Fixture Type: \_\_\_\_\_  
 SPEC #: **ELE943255**  
 Approved On: \_\_\_\_\_ Approved By: \_\_\_\_\_

## Element 3IN RD Flangeless Dual Adj New Construction Housing By Visual Comfort Architectural



### Description

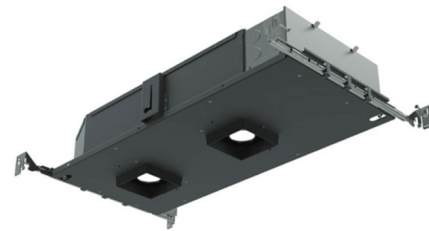
3 Inch Round 90CRI Flangeless Dual Adjustable Downlight Non-IC Airtight, IC Airtight, or Chicago Plenum New Construction Housing for round flangeless trims is a small aperture LED downlight with architectural appearance. Includes 12 or 17 watt LED module in 2700K, 3000K or 3500K color temperature options or Warm Dim LED (3000K-1800K). Offered with a 10, 18, 25, 40 or 60 degree beam angle. 3 7/8 inch ceiling opening. Suitable for damp locations. Suitable for wet locations with shower trim option. Includes a 120-277V Universal driver dimmable with standard reverse-phase, forward-phase, TRIAC, and 0-10V dimming. Note: A complete fixture requires a housing and flangeless trim, sold separately. Note: Warm Dim option is not available with 10 degree beam angle.

### Specifications

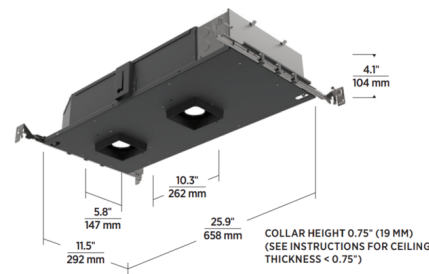
REFLECTOR/BAFFLE COLOR	N/A
BODY FINISH	Black
WATTAGE	24W
DIMMER	Low Voltage Electronic
DIMENSIONS	25.9"L x 11.5"W x 4.1"H
INTEGRATED LED MODULE	2 x LED/12W/120-277V LED

### Technical Information

APERTURE SHAPE	Round
HOUSING HEIGHT	4"
HOUSING TYPE	New construction IC Airtight
CEILING TYPE	Drywall Trimless/Flush
FUNCTION	Adjustable Accent
LAMP LIFE	50000 hours
BEAM ANGLE	60°
COLOR RENDERING	90 CRI
LAMP COLOR	3000K Warm Dim
LUMENS/WATT	150.00
LUMINOUS FLUX	1800 lumens



Shown in black



IC AIRTIGHT / NON-IC AIRTIGHT / CHICAGO PLENUM



CLICK TO VIEW PRODUCT

Notes: