



BRANDSeed Design

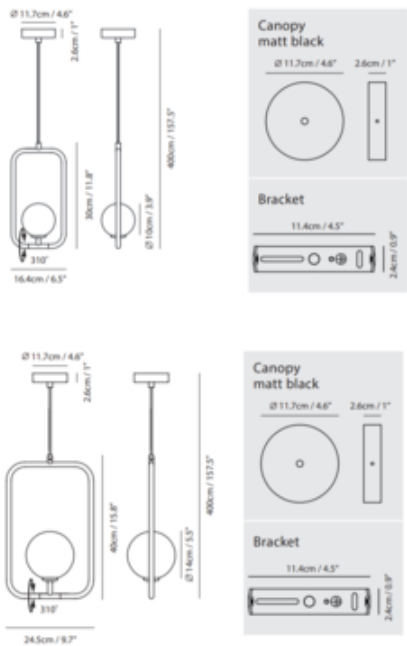
DESCRIPTION

The Sircle Pendant is inspired by the East aesthetic philosophy with a merged square and circle. The circular aspect conceals an integrated LED light and works harmoniously with the rigid frame surrounding it. The light can be positioned inside or outside of the square. Available in two sizes with a Champagne Gold or Matte Black finish. ETL listed, title 20 compliant.



Shown in: Champagne Gold / Opal

|                       |                        |
|-----------------------|------------------------|
| SHADE COLOR           | Opal                   |
| BODY FINISH           | Champagne Gold         |
| WATTAGE               | 5W                     |
| DIMMER                | Standard 120V          |
| DIMENSIONS            | 9.7"W x 15.8"H x 5.5"D |
| BULB INCLUDED         |                        |
| LAMP                  | 1 x JCD/G9/5W/120V LED |
| Technical Information |                        |
| LAMP COLOR            | 2700K                  |
| COLOR RENDERING       | 90 CRI                 |
| SPEC #                | SEE952848              |



|         |         |              |             |      |
|---------|---------|--------------|-------------|------|
| COMPANY | PROJECT | FIXTURE TYPE | APPROVED BY | DATE |
|         |         |              |             |      |