

Lightology

lightology.com
866-954-4489
07-04-25

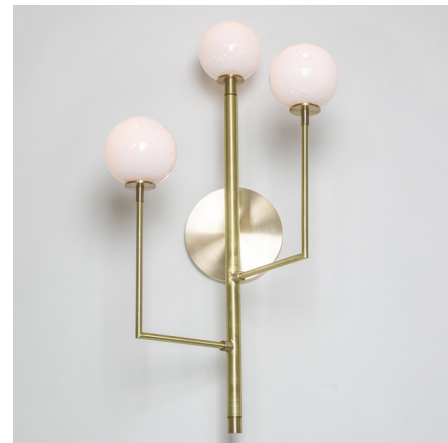
Project: _____
Company: _____
Location: _____ Fixture Type: _____
SPEC #: **ASV953551**
Approved On: _____ Approved By: _____

Halo Wall Sconce

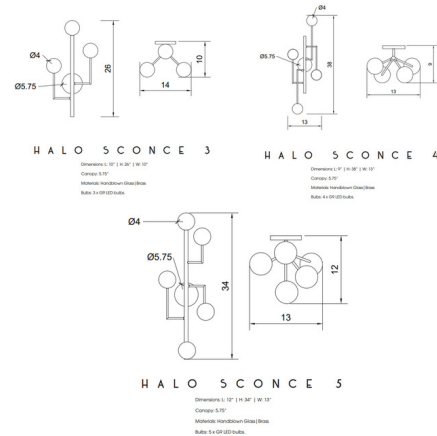
By Kalin Asenov

Description

The Halo Wall Sconce emits a sense of wonder through its use of fine materials and artisan craftsmanship. Inspired by ideas of celestial secret geometry, the Halo's Brass frame and hand blown glass globes deliver a truly stunning example of contemporary lighting. Place the Halo over the dining table to elevate your ambience. Configured with 3, 4, or 5 lights. Finished in Satin Brass, Aged Brass, or Blackened Brass. NOTE: Three light version only available in Satin Brass.



Shown in satin brass / white



Specifications

COLOR White
BODY FINISH Satin Brass
WATTAGE 18W
DIMMER Standard 120V
DIMENSIONS 10"W x 26"H x 10"D
BULB NOT INCLUDED 3 x JCD/G9/6W/120V LED
COUNTRY OF ORIGIN United States



CLICK TO VIEW PRODUCT

Notes: