

# Lightology

lightology.com  
866-954-4489  
08-04-25

Project: \_\_\_\_\_  
Company: \_\_\_\_\_  
Location: \_\_\_\_\_ Fixture Type: \_\_\_\_\_  
SPEC #: **EDG983762**  
Approved On: \_\_\_\_\_ Approved By: \_\_\_\_\_

## Vanishing Point Fast Jack Scope 12V/Remote Power

By PureEdge Lighting



### Description

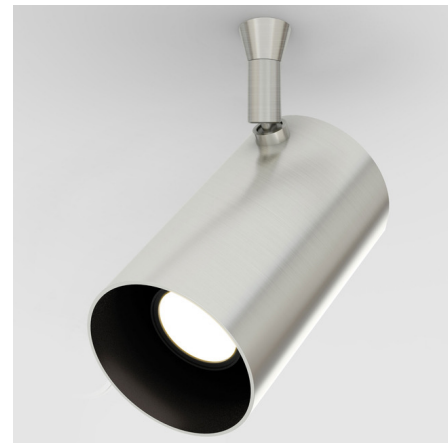
The Vanishing Point Drywall Plaster-In 12V Fast Jack Scope Head with integrated LED features no visible canopy line - just the small (0.5) inch point of connection where the fixture stem disappears into the ceiling. Available in 3000K color temperature. Features cool-to-the-touch rotating lens which allows adjustment of the beam angle from a 20 degree spot to a 50 degree flood while the fixture is illuminated. 90 degree tilt/360 degree rotation. ETL listed. Title 24 compliant. Note: Required 120-12VAC 60 watt electronic low voltage (ELV) remote power supply up to 15 feet away, or 300 watt magnetic low voltage (MLV) remote power supply up to 40 feet away, sold separately. Note: Limited quantities available.

### Specifications

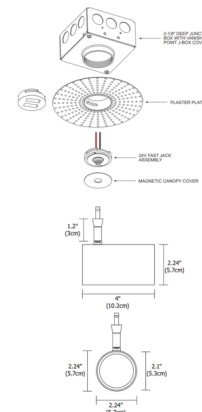
COLOR . . . . . N/A  
BODY FINISH . . . . . Satin Nickel  
WATTAGE . . . . . 9W  
DIMMER . . . . . Low Voltage Electronic  
DIMENSIONS . . . . . 2.24"W x 4"H  
INTEGRATED LED MODULE . . . . . 1 x LED/9W/12V LED

### Technical Information

LAMP LIFE . . . . . 60000 hours  
BEAM ANGLE . . . . . 25°  
COLOR RENDERING . . . . . 92 CRI  
LAMP COLOR . . . . . 3000K  
LUMENS/WATT . . . . . 40.00  
LUMINOUS FLUX . . . . . 360 lumens



Shown in satin nickel



CLICK TO VIEW PRODUCT

Notes: